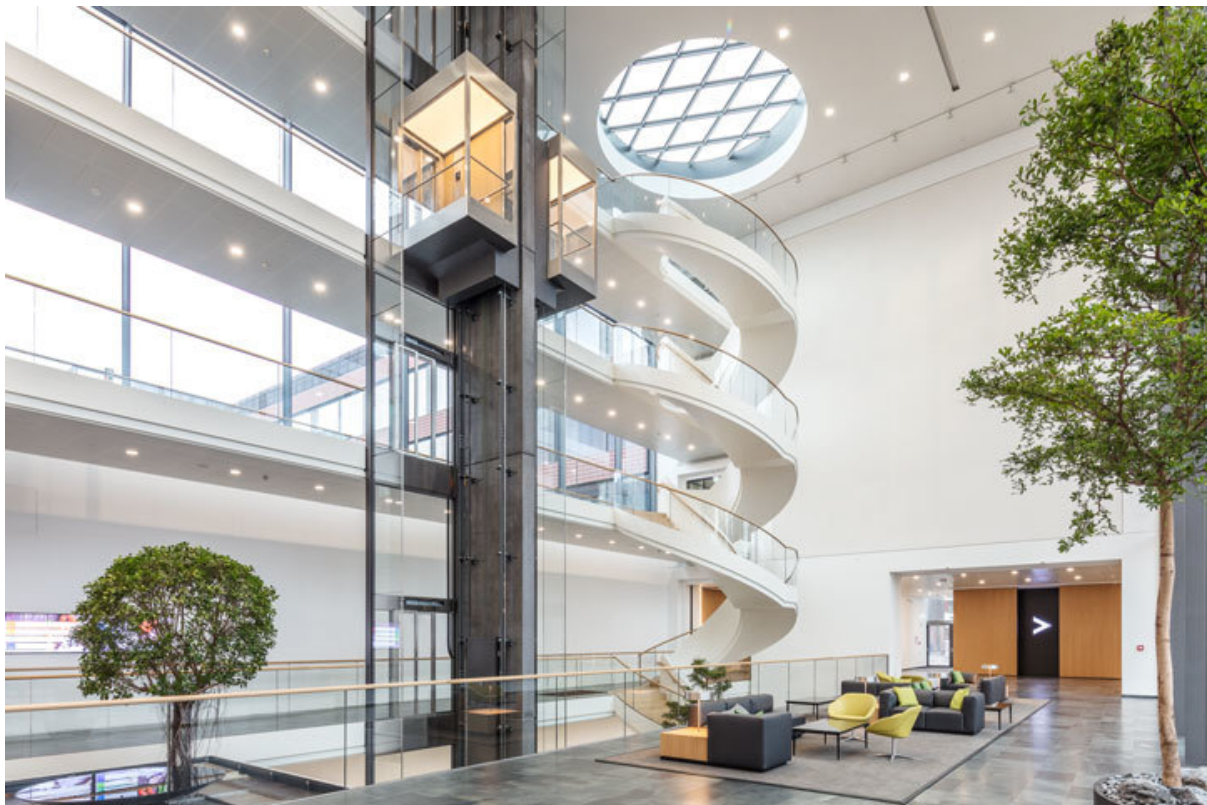


# Product data sheet

## **Slimdrive SCR GGS \***



Automatic curved sliding door system for constructing all-glass solutions

**AREAS OF APPLICATION**

- 2- and 4-leaf all-glass door systems
- Interior and exterior doors with high access frequency
- Representative building entrances with large incidence of light
- Façades with slim mullion-transom constructions
- Glass façades with the highest design standards
- Opening widths of 800 to 2300 mm possible
- Door leaf weights up to maximally 100 kg

**PRODUCT FEATURES**

- Very quiet running, low-wear direct current drive with a height of only 7 cm
- The system consists of two drives that are controlled separately from one another.
- High-quality stainless steel fittings open up a wide range of applications
- Moving leaves are frameless and are attached to the roller carriage by means of two single point fixings.
- The floor guide is attached to the glass with single point fixings.
- 40 % more opening width than with linear sliding door drives
- Wide range of drive variants and equipment options possible
- Can be networked, and integrated into the building automation via open standard (BACnet)
- Independent error recognition and recording
- Freely configurable inputs and outputs for different functions
- Integrated, rechargeable battery for emergency opening in case of safety-relevant faults, such as power failure
- Self-cleaning roller carriage reduces maintenance effort and costs
- Various mechanical and electrical locks are optionally available

**TECHNICAL DATA**

Productname	Slimdrive SCR GGS *
Barrier-free	Yes
Adjustable opening speed (ventilation)	Yes
Adjustable closing speed	Yes
Opening width 2-leaf	800 mm – 2300 mm
Clear passage height	2500 mm
Canopy height (min.)	75 mm
Leaf weight (max.) 1-leaf	120 kg
Leaf weight (max.) 2-leaf	120 kg

Radius (min.)	1250 mm
Radius (max.)	2000 mm
Moving leaf version	10 mm ESG-H with GGS fitting system (GGS variant), Special glass on request
Side elements version	10 mm LSG, Special glass on request
Surface	Powder-coated according to RAL, Anodised light alloy E6/EV1, colour anodised according to sample, Coated with polished stainless steel, coated with grit 240 stainless steel, special coating on request
Version of roof structure	optical sheet metal covering, Glass roof
Illumination	not possible with glass roof
Floor covering	Entrance mat, Entrance mat according to customer wishes
Hot-air curtain system	possible, depends on the ceiling construction
Off-centre façade connection	Yes
Special functions on request	Yes
Operation	Programme switch DPS, Programme switch TPS, Control via building management system
Standard conformity	DIN 18650, EN 16005

## ACCESSORIES

### GC 307+ \*

Non-contact proximity switch for activating automatic doors



Designation	Description	Ident-No.	Colour	Dimensions	Type of installation
GC 307+ (hand icon) *	Proximity switch for the activation of automatic doors	195727	alpine white	80 x 80 x 21 mm	Surface-mounted installation
GC 307+ (WC icon) *	Proximity switch for the activation of automatic doors / Suitable for Powerturn, EMD, and standard sliding doors	195751	alpine white	80 x 80 x 21 mm	Surface-mounted installation
GC 307+ (hand icon) *	Proximity switch for the activation of automatic doors	193226	alpine white	80 x 80 x 8 mm	Flush-mounted installation
GC 307+ (WC icon) *	Proximity switch for the activation of automatic doors / Suitable for Powerturn, EMD, and standard sliding doors	195750	alpine white	80 x 80 x 8 mm	Flush-mounted installation

### INTERLOCKING DOOR SYSTEM FUNCTION \*

Prevents simultaneous opening of two doors that are installed in a row



Designation	Ident-No.	Dimensions	Type of installation
Interlocking door system function *	109072	192 x 164 x 87 mm	Surface-mounted installation, Flush-mounted installation

### AIR 30 \*

Active infrared light switch for side panel protection of automatic curved sliding doors



### SW MINI-BUTTON \*

Can be used in the retail sector for one-time opening of automatic doors to leave the building in night mode



Designation	Ident-No.	Colour	Dimensions	Type of installation
SW mini-button *	098861	black	20 x 20 x 11 x 22 mm	Flush-mounted installation

### DIGITAL PROGRAMMABLE TIMER \*

For time-controlled changes of modes of operation on automatic doors



### E2 ROCKER PUSH BUTTON

Activation of all GEZE automatic doors



Designation	Ident-No.	Colour	Dimensions	Type of installation
E2 rocker push button	094013	pure white matt	80.8 x 80.8 x 9.3 mm	Flush-mounted installation

### LS 990 ROCKER PUSH BUTTON

Activation of all GEZE automatic doors



Designation	Ident-No.	Colour	Dimensions	Type of installation
LS 990 rocker push button	098396	Stainless steel	81 x 81 x 11 mm	Flush-mounted installation

### SERVICE INTERFACE

Faster diagnosis and maintenance



Designation	Description	Ident-No.
Service interface EC T2	to be mounted onto cover of sliding doors. Allows the connection of Service Terminal or Bluetooth Interface.Connector cable length: 3 meters	181028

\* The products designated above may vary in form, type, characteristics, function, or availability depending on the country. Please get in touch with your GEZE contact person if you have any questions.