

# Product data sheet

# **Slimdrive SL-T30** \*



Automatic sliding door system for fire protection doors with  
resistance class T30

## AREAS OF APPLICATION

- Single and double leaf sliding door systems
- Door leaf weight of up to 120 kg per leaf
- Opening widths of 900 to 2500 mm possible

**PRODUCT FEATURES**

- Very quiet running, low-wear direct current drive with a height of only 7 cm
- Independent error recognition and recording
- Various mechanical and electrical locks are optionally available

**TECHNICAL DATA**

Productname	Slimdrive SL-T30 *
For 1-leaf door systems	Yes
For 2-leaf door systems	Yes
Fire protection leaf T30 (Hörmann)	Yes
Height	70 mm
Depth	189 mm
Leaf weight (max.) 1-leaf	120 kg
Leaf weight (max.) 2-leaf	120 kg
Opening width 1-leaf	700 mm - 2000 mm
Opening width 2-leaf	900 mm - 3000 mm
Service temperature	10 - 40 °C
IP rating	IP20
Disconnection from mains	Main switch in the drive
Standard conformity	DIN EN ISO 13849: Performance Level D

**ACCESSORIES****EFT ELBOW SWITCH \***

Stainless steel elbow switch with IP65 IP rating for activating automatic doors



Designation	Description	Ident-No.	Colour	Dimensions	Type of installation
EFT elbow switch	Very flat design / IP rating IP65	119898	Stainless steel	75 x 250 x 17 mm	Surface-mounted installation

### KFT ELBOW SWITCH

Plastic elbow switch, IP rating IP20, for activation of automatic doors



Designation	Description	Ident-No.	Colour	Dimensions	Type of installation
KFT elbow switch	Very flat design, IP rating IP20	114077	stainless steel colour	90 x 179 x 23 mm	Surface-mounted installation
KFT elbow switch	Very flat design, IP rating IP20	114078	white	90 x 179 x 23 mm	Surface-mounted installation

### LS 990 ELBOW SWITCH

Elbow switch for activating automatic doors



Designation	Description	Ident-No.	Colour	Dimensions	Type of installation
LS 990 elbow switch	IP rating IP30 H=223mm	128583	Stainless steel	81 x 223 x 18 mm	Flush-mounted installation
LS 990 elbow switch	IP rating IP30 H=223mm	128582	Stainless steel	81 x 223 x 51 mm	Surface-mounted installation
LS 990 elbow switch	IP rating IP30 H=223mm	141041	alpine white	81 x 223 x 51 mm	Surface-mounted installation
LS 990 elbow switch	IP rating IP30 H=223mm	141042	alpine white	81 x 223 x 18 mm	Flush-mounted installation

### LED SENSOR FOOT SWITCH \*

Switch for activating automatic doors



Designation	Description	Ident-No.	Colour	Dimensions	Output
LED sensor foot switch *	Capacitive push button for activating automatic door systems. Protection rating IP69K	182936	Stainless steel	100 x 100 x 3 x 14 mm	PNP transistor output

**LED SENSOR SWITCH \***

Switch for activating automatic doors



Designation	Description	Ident-No.	Colour	Dimensions	Output
LED sensor switch *	Capacitive push button with blue LED lighting and haptic Braille lettering for activating automatic door systems. Protection rating IP69K	137529	black	100 x 100 x 10 mm	PNP transistor output
LED sensor switch glass *	Capacitive push button with blue LED lighting for activating automatic door systems. Protection rating IP69K	143412	white	100 x 100 x 8 mm	PNP transistor output

**AS 500 ROCKER PUSH BUTTON**

Activation of all GEZE automatic doors



Designation	Ident-No.	Colour	Dimensions	Type of installation
AS 500 rocker push button	120888	alpine white	80 x 80 x 9 mm	Flush-mounted installation

**GC 365**

Combined detector for activating and protecting automatic sliding doors with four different infrared light curtain configuration settings



Designation	Description	Ident-No.	Colour	Dimensions	Output
Combined detector GC 365 R	Combined detector for the activation and safeguarding of automatic sliding doors	160283	black	267 x 61 x 38 mm	Potential-free relay contact
Combined detector GC 365 SF	Combined detector for the activation and safeguarding of automatic sliding doors in escape route direction	160284	black	267 x 61 x 38 mm	

# Slimdrive SL-T30 \*



## DPS

Display programme switch for setting the mode of operation for automatic doors



Designation	Description	Ident-No.	Colour	Dimensions	Operating voltage
Display programme switch DPS with OFF switch	Configuring the mode of operation as well as commissioning and parameter setting for automatic doors / with 5x control keys, 2x7 segment display, alphanumerical fault display, IP rating IP40	151524	alpine white	80 x 80 x 53 mm	24 V DC
DPS with OFF switch and SCT key switch	in combined double frame without Euro profile half cylinder	155810	alpine white	80 x 151 x 50 mm	24 V DC

## GC 341 \*

Safety sensor for automatic doors



Designation	Description	Ident-No.	Colour	Dimensions	Operating voltage
GC 341 *	Safety sensor for automatic doors	160285	black	267 x 61 x 38 mm	24 V DC

## MINI LED SENSOR SWITCH \*

Activation of all GEZE automatic doors



Designation	Description	Ident-No.	Colour	Dimensions	Output
LED sensor switch 20 mm *	Capacitive push button for activating automatic door systems. Protection rating IP69K	143273	Aluminium, matt	28.5 x 28.5 x 21 mm	PNP transistor output

## MPS

Mechanical programme switch for setting the mode of operation for automatic doors



Designation	Description	Ident-No.	Colour	Dimensions	Operating voltage
MPS mechanical programme switch	Setting of the mode of operation of automatic doors with rotary knob, LED fault display, IP rating IP40 / suitable for switch programmes with 55x55mm switch insert	113226	alpine white	80 x 80 x 24 mm	24 V DC
MPS ST mechanical programme switch	Setting of the mode of operation of automatic doors with key, LED fault display, IP rating IP40, keyed alike cylinder, incl. 2x keys / suitable for switch programmes with 55x55mm switch insert	113227	alpine white	80 x 80 x 24 mm	24 V DC

## AS 500 \*

AS emergency stop switch with glass pane and five interchangeable labels ("Nottaster öffnen", "Notschalter", "Emergency switch", "Tür schließen" and without text)



Designation	Description	Ident-No.	Colour	Dimensions	Type of installation
AS 500 emergency stop switch	Rocker control switch with glow lamp, glass pane and five exchangeable labels ("open emergency push button", "emergency stop switch", "emergency switch", "close door" and no label)	120881	alpine white/red	80 x 80 x 21 mm	Flush-mounted installation

## SCT STAINLESS STEEL \*

Key switch stainless steel for authorised activation and for changing the mode of operation of automatic doors



Designation	Description	Ident-No.	Colour	Dimensions	Type of installation
Key switch, switching operation without Euro profile half cylinder	Mounting with claws or screws, one-sided switching operation (key can be removed in the central position), cover can only be removed with key, light alloy housing, IP rating IP54	098870	silver-coloured	79 x 79 x 12.5 mm	Flush-mounted installation
Key switch with Euro profile half cylinder and three keys	adjustable stay-put or switching operation on both sides (key can be pulled out in the central position), cover can only be removed with key, light alloy housing, IP rating IP54	137056	silver-coloured		Surface-mounted installation

Designation	Description	Ident-No.	Colour	Dimensions	Type of installation
Key switch, stay-put without Euro profile half cylinder	Attachment with claws or screws, stay-put on one side (key can be removed in the central position), cover can only be removed with key, light alloy housing, IP rating IP54	111357	silver-coloured	79 x 79 x 12 mm	Flush-mounted installation

### SCT KEY SWITCH

Key switch for authorised activation and for changing the mode of operation of automatic doors



Designation	Description	Ident-No.	Colour	Dimensions	Type of installation
SCT key switch	2-pin with Euro profile half cylinder, two-sided switching operation, without AS 500 frame	118478	alpine white		
SCT key switch	1 pin without Euro profile half cylinder, single-sided switching operation	117996	alpine white	80 x 80 x 11 mm	Flush-mounted installation

### SCT 221

Key switch for authorised activation and changing the mode of operation of automatic doors, surface and flush-mounted



Designation	Description	Ident-No.	Colour	Dimensions	Type of installation
SCT 221 key switch	One-sided switching operation, without Euro profile half cylinder / One-sided switching operation (key can only be removed in the central position), cover can only be removed with key, light alloy housing, IP rating IP54	054240	silver-coloured	75 x 75 x 11 mm	Flush-mounted installation
SCT 221 key switch	One-sided switching operation, without Euro profile half cylinder / One-sided switching operation (key can only be removed in the central position), cover can only be removed with key, light alloy housing, IP rating IP54	054532	silver-coloured	75 x 75 x 50 mm	Surface-mounted installation

## TPS

Keypad programme switch for setting the mode of operation for automatic doors



Designation	Description	Ident-No.	Colour	Dimensions	Operating voltage
TPS keypad programme switch	with 2 control keys, LED display, coded fault display, IP rating IP40 / suitable for switch programmes with 55x55mm switch insert	113231	alpine white	80 x 80 x 11 mm	24 V DC
TPS keypad programme switch and SCT key switch	in combined double frame without Euro profile half cylinder	113232	alpine white	80 x 152 x 11 mm	24 V DC

## WRM-24 \*

Receiving module for activating automatic doors and window drives with 24 V DC



Designation	Description	Ident-No.	Colour	Dimensions	Output
WRM-24 receiving module *	52 x 47 x 23 mm (W x H x D), for installation in a standard flush-mounted socket / 24 V DC operating voltage, pulsed operation or pulsed and continuous operation	131213	black	52 x 52 x 47 x 23 mm	2 potential-free relay contacts

## WRM-24B \*

Receiving module for activating automatic doors and window drives with 24 V DC



Designation	Description	Ident-No.	Colour	Dimensions	Output
WRM-24B receiving module *	130 x 80 x 35 mm (W x H x D), for surface mounting with protection class IP54 / 24 V DC operating voltage, pulsed operation or pulsed and continuous operation	131214	white	130 x 130 x 80 x 35 mm	2 potential-free relay contacts



**WTH \***

Remote control for activating GEZE automatic doors and window drives via the GEZE wireless programme



Designation	Description	Ident-No.	Dimensions	Operating voltage	Type of installation
WTH-2 remote control, 2 channel *	with wall fixing and IP rating IP54	131210	78 x 51 x 15 mm	12 V DC	Wall
WTH-4 remote control, 4 channel *	with wall fixing and IP rating IP54	131211	78 x 51 x 15 mm	12 V DC	Wall
WTH-1 remote control, 1 channel *	with wall fixing and IP rating IP54	131209	78 x 51 x 15 mm	12 V DC	Wall

**AS 500**

Manual trigger switch for the manual release of electrically controlled hold-open devices



Designation	Description	Ident-No.	Colour	Dimensions	Operating voltage
AS 500 manual trigger switch	for the manual release of electrically controlled hold-open devices including terminating resistor for line monitoring	116266	alpine white/red	80 x 80 x 9 mm	24 V DC
AS 500 manual trigger switch, glass	for the manual release of electrically controlled hold-open devices including terminating resistor for line monitoring, glass pane and 5 interchangeable labels	120880	alpine white/red	80 x 80 x 21 mm	24 V DC

**MULTI-FUNCTION RELAY \***

Digital settable multifunction time relay



Designation	Description	Ident-No.	Dimensions	Type of installation
Multifunction relay 10-250V AC/DC *	Relay with built-in time-dependent activation, times for On and Off phase separately adjustable from 0.75 s to 60 min Possible applications: response delay, flashing relay, etc.	182160	18 x 86 x 58 mm	Top hat rail mounting

**GC 307+ \***

Non-contact proximity switch for activating automatic doors



Designation	Description	Ident-No.	Colour	Dimensions	Type of installation
GC 307+ (hand icon) *	Proximity switch for the activation of / automatic doors	195727	alpine white	80 x 80 x 21 mm	Surface-mounted installation
GC 307+ (WC icon) *	Proximity switch for the activation of / automatic doors / Suitable for Powerturn, EMD, and standard sliding doors	195751	alpine white	80 x 80 x 21 mm	Surface-mounted installation
GC 307+ (hand icon) *	Proximity switch for the activation of / automatic doors	193226	alpine white	80 x 80 x 8 mm	Flush-mounted installation
GC 307+ (WC icon) *	Proximity switch for the activation of / automatic doors / Suitable for Powerturn, EMD, and standard sliding doors	195750	alpine white	80 x 80 x 8 mm	Flush-mounted installation

**RSZ 7 \***

Extendable smoke switch control unit for all GEZE hold-open devices

GEZE

Designation	Description	Ident-No.	Colour	Supply voltage
RSZ 7 smoke switch control unit *	Smoke switch control unit for all GEZE hold-open devices	185231	according to RAL	230 V
RSZ 7 smoke switch control unit *	Smoke switch control unit for all GEZE hold-open devices	184196	Stainless steel optic	230 V
RSZ 7 smoke switch control unit *	Smoke switch control unit for all GEZE hold-open devices	181025	silver-coloured	230 V
RSZ 7 smoke switch control unit *	Smoke switch control unit for all GEZE hold-open devices	184195	white RAL 9016	230 V



## GC 339+ \*

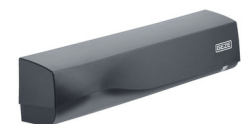
Safety sensor for automatic sliding, revolving, and curved sliding doors, as well as for windows



Designation	Description	Ident-No.	Colour	Dimensions	Output
GC 339+ *	Safety sensor for automatic doors	203858	black	209 x 58 x 47 mm	Potential-free relay contact

## GC 363+ \*

Combined detector for activating and protecting automatic sliding doors with ten different infrared light curtain configuration settings



Designation	Description	Ident-No.	Colour	Dimensions	Output
GC 363+ R *	Combined detector for the activation and safeguarding of automatic sliding doors	203854	black	270 x 58 x 58 mm	Potential-free relay contact
GC 363+ SF *	Combined detector for the activation and safeguarding of automatic sliding doors	203856	black	270 x 58 x 58 mm	

## DIGITAL PROGRAMMABLE TIMER \*

For time-controlled changes of modes of operation on automatic doors



## E2 ROCKER PUSH BUTTON

Activation of all GEZE automatic doors



Designation	Ident-No.	Colour	Dimensions	Type of installation
E2 rocker push button	094013	pure white matt	80.8 x 80.8 x 9.3 mm	Flush-mounted installation



## LS 990 ROCKER PUSH BUTTON

Activation of all GEZE automatic doors



Designation	Ident-No.	Colour	Dimensions	Type of installation
LS 990 rocker push button	098396	Stainless steel	81 x 81 x 11 mm	Flush-mounted installation

## SERVICE INTERFACE

Faster diagnosis and maintenance



Designation	Description	Ident-No.
Service interface EC T2	to be mounted onto cover of sliding doors. Allows the connection of Service Terminal or Bluetooth Interface.Connector cable length: 3 meters	181028

\* The products designated above may vary in form, type, characteristics, function, or availability depending on the country. Please get in touch with your GEZE contact person if you have any questions.