

# Product data sheet

## **Slimdrive SLV \***



Automatic sliding door system for use on angled façades or corners



## AREAS OF APPLICATION

- Double leaf sliding door systems
- For use on angled façades or corners
- Interior and exterior doors with high access frequency
- Façades with slim mullion-transom constructions
- Glass façades with the highest design standards
- Opening widths of 900 to 2500 mm possible
- Door leaf weight of up to 120 kg per leaf
- Suitable profile systems are fine-framed profile systems with ISO and mono glass
- Suitable for various profile systems

## PRODUCT FEATURES

- The product is designed and manufactured specifically for each project
- Very quiet running, low-wear direct current drive with a height of only 7 cm
- Angle in the drive rail 90° to 270°.
- Can be networked, and integrated into the building automation via open standard (BACnet)
- Independent error recognition and recording
- Freely configurable inputs and outputs for different functions
- Integrated battery for emergency opening and closing in the event of a power failure
- Self-cleaning roller carriage reduces maintenance effort and costs
- Various mechanical and electrical locks are optionally available

## TECHNICAL DATA

|                         |                 |
|-------------------------|-----------------|
| Productname             | Slimdrive SLV * |
| For 1-leaf door systems | -               |

**ACCESSORIES****EFT ELBOW SWITCH \***

Stainless steel elbow switch with IP65 IP rating for activating automatic doors



| Designation      | Description                       | Ident-No. | Colour          | Dimensions       | Type of installation         |
|------------------|-----------------------------------|-----------|-----------------|------------------|------------------------------|
| EFT elbow switch | Very flat design / IP rating IP65 | 119898    | Stainless steel | 75 x 250 x 17 mm | Surface-mounted installation |

**KFT ELBOW SWITCH**

Plastic elbow switch, IP rating IP20, for activation of automatic doors



| Designation      | Description                      | Ident-No. | Colour                 | Dimensions       | Type of installation         |
|------------------|----------------------------------|-----------|------------------------|------------------|------------------------------|
| KFT elbow switch | Very flat design, IP rating IP20 | 114077    | stainless steel colour | 90 x 179 x 23 mm | Surface-mounted installation |
| KFT elbow switch | Very flat design, IP rating IP20 | 114078    | white                  | 90 x 179 x 23 mm | Surface-mounted installation |

**LS 990 ELBOW SWITCH**

Elbow switch for activating automatic doors



| Designation         | Description            | Ident-No. | Colour          | Dimensions       | Type of installation         |
|---------------------|------------------------|-----------|-----------------|------------------|------------------------------|
| LS 990 elbow switch | IP rating IP30 H=223mm | 128583    | Stainless steel | 81 x 223 x 18 mm | Flush-mounted installation   |
| LS 990 elbow switch | IP rating IP30 H=223mm | 128582    | Stainless steel | 81 x 223 x 51 mm | Surface-mounted installation |
| LS 990 elbow switch | IP rating IP30 H=223mm | 141041    | alpine white    | 81 x 223 x 51 mm | Surface-mounted installation |
| LS 990 elbow switch | IP rating IP30 H=223mm | 141042    | alpine white    | 81 x 223 x 18 mm | Flush-mounted installation   |

### LED SENSOR FOOT SWITCH \*

Switch for activating automatic doors



| Designation              | Description   | Ident-No. | Colour          | Dimensions            | Output                |
|--------------------------|---|-----------|-----------------|-----------------------|-----------------------|
| LED sensor foot switch * | Capacitive push button for activating automatic door systems. Protection rating IP69K | 182936    | Stainless steel | 100 x 100 x 3 x 14 mm | PNP transistor output |

### LED SENSOR SWITCH \*

Switch for activating automatic doors



| Designation               | Description   | Ident-No. | Colour | Dimensions        | Output                |
|---------------------------|---|-----------|--------|-------------------|-----------------------|
| LED sensor switch *       | Capacitive push button with blue LED lighting and haptic Braille lettering for activating automatic door systems. Protection rating IP69K | 137529    | black  | 100 x 100 x 10 mm | PNP transistor output |
| LED sensor switch glass * | Capacitive push button with blue LED lighting for activating automatic door systems. Protection rating IP69K                              | 143412    | white  | 100 x 100 x 8 mm  | PNP transistor output |

### AS 500 ROCKER PUSH BUTTON

Activation of all GEZE automatic doors



| Designation               | Ident-No. | Colour       | Dimensions     | Type of installation       |
|---------------------------|-----------|--------------|----------------|----------------------------|
| AS 500 rocker push button | 120888    | alpine white | 80 x 80 x 9 mm | Flush-mounted installation |

### PULL SWITCH \*

For triggering calls in barrier-free bathrooms or WCs



| Designation | Description                  | Ident-No. | Colour | Dimensions      | Type of installation         |
|-------------|------------------------------|-----------|--------|-----------------|------------------------------|
| Pull switch | Incl. pull chain 500 mm long | 008607    | red    | 36 x 94 x 34 mm | Surface-mounted installation |

### GC 365

Combined detector for activating and protecting automatic sliding doors with four different infrared light curtain configuration settings



| Designation                 | Description  | Ident-No. | Colour | Dimensions       | Output                       |
|-----------------------------|--|-----------|--------|------------------|------------------------------|
| Combined detector GC 365 R  | Combined detector for the activation and safeguarding of automatic sliding doors                           | 160283    | black  | 267 x 61 x 38 mm | Potential-free relay contact |
| Combined detector GC 365 SF | Combined detector for the activation and safeguarding of automatic sliding doors in escape route direction | 160284    | black  | 267 x 61 x 38 mm |                              |

### DPS

Display programme switch for setting the mode of operation for automatic doors



| Designation                                  | Description  | Ident-No. | Colour       | Dimensions       | Operating voltage |
|--|--|-----------|--------------|------------------|-------------------|
| Display programme switch DPS with OFF switch | Configuring the mode of operation as well as commissioning and parameter setting for automatic doors / with 5x control keys, 2x7 segment display, alphanumerical fault display, IP rating IP40 | 151524    | alpine white | 80 x 80 x 53 mm  | 24 V DC           |
| DPS with OFF switch and SCT key switch       | in combined double frame without Euro profile half cylinder  | 155810    | alpine white | 80 x 151 x 50 mm | 24 V DC           |

# Slimdrive SLV \*



## GC 341 \*

Safety sensor for automatic doors



| Designation | Description                       | Ident-No. | Colour | Dimensions       | Operating voltage |
|-------------|-----------------------------------|-----------|--------|------------------|-------------------|
| GC 341 *    | Safety sensor for automatic doors | 160285    | black  | 267 x 61 x 38 mm | 24 V DC           |

## MINI LED SENSOR SWITCH \*

Activation of all GEZE automatic doors



| Designation               | Description   | Ident-No. | Colour          | Dimensions          | Output                |
|---------------------------|---|-----------|-----------------|---------------------|-----------------------|
| LED sensor switch 20 mm * | Capacitive push button for activating automatic door systems. Protection rating IP69K | 143273    | Aluminium, matt | 28.5 x 28.5 x 21 mm | PNP transistor output |

## MPS

Mechanical programme switch for setting the mode of operation for automatic doors



| Designation                        | Description  | Ident-No. | Colour       | Dimensions      | Operating voltage |
|------------------------------------|--|-----------|--------------|-----------------|-------------------|
| MPS mechanical programme switch    | Setting of the mode of operation of automatic doors with rotary knob, LED fault display, IP rating IP40 / suitable for switch programmes with 55x55mm switch insert                              | 113226    | alpine white | 80 x 80 x 24 mm | 24 V DC           |
| MPS ST mechanical programme switch | Setting of the mode of operation of automatic doors with key, LED fault display, IP rating IP40, keyed alike cylinder, incl. 2x keys / suitable for switch programmes with 55x55mm switch insert | 113227    | alpine white | 80 x 80 x 24 mm | 24 V DC           |

**AS 500 \***

AS emergency stop switch with glass pane and five interchangeable labels ("Nottaster öffnen", "Notschalter", "Emergency switch", "Tür schließen" and without text)



| Designation                  | Description  | Ident-No. | Colour           | Dimensions      | Type of installation       |
|------------------------------|--|-----------|------------------|-----------------|----------------------------|
| AS 500 emergency stop switch | Rocker control switch with glow lamp, glass pane and five exchangeable labels ("open emergency push button", "emergency stop switch", "emergency switch", "close door" and no label) | 120881    | alpine white/red | 80 x 80 x 21 mm | Flush-mounted installation |

**SCT STAINLESS STEEL \***

Key switch stainless steel for authorised activation and for changing the mode of operation of automatic doors



| Designation  | Description  | Ident-No. | Colour          | Dimensions        | Type of installation         |
|--|--|-----------|-----------------|-------------------|------------------------------|
| Key switch, switching operation without Euro profile half cylinder | Mounting with claws or screws, one-sided switching operation (key can be removed in the central position), cover can only be removed with key, light alloy housing, IP rating IP54 | 098870    | silver-coloured | 79 x 79 x 12.5 mm | Flush-mounted installation   |
| Key switch with Euro profile half cylinder and three keys          | adjustable stay-put or switching operation on both sides (key can be pulled out in the central position), cover can only be removed with key, light alloy housing, IP rating IP54  | 137056    | silver-coloured |                   | Surface-mounted installation |
| Key switch, stay-put without Euro profile half cylinder            | Attachment with claws or screws, stay-put on one side (key can be removed in the central position), cover can only be removed with key, light alloy housing, IP rating IP54        | 111357    | silver-coloured | 79 x 79 x 12 mm   | Flush-mounted installation   |

### SCT KEY SWITCH

Key switch for authorised activation and for changing the mode of operation of automatic doors



| Designation    | Description  | Ident-No. | Colour       | Dimensions      | Type of installation       |
|----------------|--|-----------|--------------|-----------------|----------------------------|
| SCT key switch | 2-pin with Euro profile half cylinder, two-sided switching operation, without AS 500 frame | 118478    | alpine white |                 |                            |
| SCT key switch | 1 pin without Euro profile half cylinder, single-sided switching operation                 | 117996    | alpine white | 80 x 80 x 11 mm | Flush-mounted installation |

### SCT 221

Key switch for authorised activation and changing the mode of operation of automatic doors, surface and flush-mounted



| Designation        | Description  | Ident-No. | Colour          | Dimensions      | Type of installation         |
|--------------------|--|-----------|-----------------|-----------------|------------------------------|
| SCT 221 key switch | One-sided switching operation, without Euro profile half cylinder / One-sided switching operation (key can only be removed in the central position), cover can only be removed with key, light alloy housing, IP rating IP54 | 054240    | silver-coloured | 75 x 75 x 11 mm | Flush-mounted installation   |
| SCT 221 key switch | One-sided switching operation, without Euro profile half cylinder / One-sided switching operation (key can only be removed in the central position), cover can only be removed with key, light alloy housing, IP rating IP54 | 054532    | silver-coloured | 75 x 75 x 50 mm | Surface-mounted installation |

### TPS

Keypad programme switch for setting the mode of operation for automatic doors



| Designation                                    | Description   | Ident-No. | Colour       | Dimensions       | Operating voltage |
|--|---|-----------|--------------|------------------|-------------------|
| TPS keypad programme switch                    | with 2 control keys, LED display, coded fault display, IP rating IP40 / suitable for switch programmes with 55x55mm switch insert | 113231    | alpine white | 80 x 80 x 11 mm  | 24 V DC           |
| TPS keypad programme switch and SCT key switch | in combined double frame without Euro profile half cylinder   | 113232    | alpine white | 80 x 152 x 11 mm | 24 V DC           |



**WRM-24 \***

Receiving module for activating automatic doors and window drives with 24 V DC



| Designation                     | Description   | Ident-No. | Colour | Dimensions              | Output                             |
|---------------------------------|---|-----------|--------|-------------------------|------------------------------------|
| WRM-24<br>receiving module<br>* | 52 x 47 x 23 mm (W x H x D), for installation in a standard flush-mounted socket / 24 V DC operating voltage, pulsed operation or pulsed and continuous operation | 131213    | black  | 52 x 52 x 47<br>x 23 mm | 2 potential-free<br>relay contacts |

**WRM-24B \***

Receiving module for activating automatic doors and window drives with 24 V DC



| Designation                      | Description  | Ident-No. | Colour | Dimensions                | Output                             |
|----------------------------------|--|-----------|--------|---------------------------|------------------------------------|
| WRM-24B<br>receiving module<br>* | 130 x 80 x 35 mm (W x H x D), for surface mounting with protection class IP54 / 24 V DC operating voltage, pulsed operation or pulsed and continuous operation | 131214    | white  | 130 x 130 x<br>80 x 35 mm | 2 potential-free<br>relay contacts |

**WTH \***

Remote control for activating GEZE automatic doors and window drives via the GEZE wireless programme



| Designation                       | Description                         | Ident-No. | Dimensions         | Operating voltage | Type of installation |
|-----------------------------------|-------------------------------------|-----------|--------------------|-------------------|----------------------|
| WTH-2 remote control, 2 channel * | with wall fixing and IP rating IP54 | 131210    | 78 x 51 x 15<br>mm | 12 V DC           | Wall                 |
| WTH-4 remote control, 4 channel * | with wall fixing and IP rating IP54 | 131211    | 78 x 51 x 15<br>mm | 12 V DC           | Wall                 |
| WTH-1 remote control, 1 channel * | with wall fixing and IP rating IP54 | 131209    | 78 x 51 x 15<br>mm | 12 V DC           | Wall                 |

### AS 500

Manual trigger switch for the manual release of electrically controlled hold-open devices



| Designation                         | Description   | Ident-No. | Colour           | Dimensions      | Operating voltage |
|-------------------------------------|---|-----------|------------------|-----------------|-------------------|
| AS 500 manual trigger switch        | for the manual release of electrically controlled hold-open devices including terminating resistor for line monitoring  | 116266    | alpine white/red | 80 x 80 x 9 mm  | 24 V DC           |
| AS 500 manual trigger switch, glass | for the manual release of electrically controlled hold-open devices including terminating resistor for line monitoring, glass pane and 5 interchangeable labels | 120880    | alpine white/red | 80 x 80 x 21 mm | 24 V DC           |

### MULTI-FUNCTION RELAY \*

Digital settable multifunction time relay



| Designation                         | Description  | Ident-No. | Dimensions      | Type of installation  |
|-------------------------------------|--|-----------|-----------------|-----------------------|
| Multifunction relay 10-250V AC/DC * | Relay with built-in time-dependent activation, times for On and Off phase separately adjustable from 0.75 s to 60 min<br>Possible applications: response delay, flashing relay, etc. | 182160    | 18 x 86 x 58 mm | Top hat rail mounting |

### GC 307+ \*

Non-contact proximity switch for activating automatic doors



| Designation           | Description  | Ident-No. | Colour       | Dimensions      | Type of installation         |
|-----------------------|--|-----------|--------------|-----------------|------------------------------|
| GC 307+ (hand icon) * | Proximity switch for the activation of / automatic doors   | 195727    | alpine white | 80 x 80 x 21 mm | Surface-mounted installation |
| GC 307+ (WC icon) *   | Proximity switch for the activation of / automatic doors / Suitable for Powerturn, EMD, and standard sliding doors | 195751    | alpine white | 80 x 80 x 21 mm | Surface-mounted installation |
| GC 307+ (hand icon) * | Proximity switch for the activation of / automatic doors   | 193226    | alpine white | 80 x 80 x 8 mm  | Flush-mounted installation   |
| GC 307+ (WC icon) *   | Proximity switch for the activation of / automatic doors / Suitable for Powerturn, EMD, and standard sliding doors | 195750    | alpine white | 80 x 80 x 8 mm  | Flush-mounted installation   |

# Slimdrive SLV \*



## GC 339+ \*

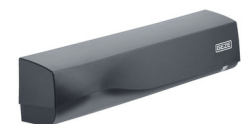
Safety sensor for automatic sliding, revolving, and curved sliding doors, as well as for windows



| Designation | Description                       | Ident-No. | Colour | Dimensions       | Output                       |
|-------------|-----------------------------------|-----------|--------|------------------|------------------------------|
| GC 339+ *   | Safety sensor for automatic doors | 203858    | black  | 209 x 58 x 47 mm | Potential-free relay contact |

## GC 363+ \*

Combined detector for activating and protecting automatic sliding doors with ten different infrared light curtain configuration settings



| Designation  | Description  | Ident-No. | Colour | Dimensions       | Output                       |
|--------------|--|-----------|--------|------------------|------------------------------|
| GC 363+ R *  | Combined detector for the activation and safeguarding of automatic sliding doors | 203854    | black  | 270 x 58 x 58 mm | Potential-free relay contact |
| GC 363+ SF * | Combined detector for the activation and safeguarding of automatic sliding doors | 203856    | black  | 270 x 58 x 58 mm |                              |

## DIGITAL PROGRAMMABLE TIMER \*

For time-controlled changes of modes of operation on automatic doors



## E2 ROCKER PUSH BUTTON

Activation of all GEZE automatic doors



| Designation           | Ident-No. | Colour          | Dimensions           | Type of installation       |
|-----------------------|-----------|-----------------|----------------------|----------------------------|
| E2 rocker push button | 094013    | pure white matt | 80.8 x 80.8 x 9.3 mm | Flush-mounted installation |



**LS 990 ROCKER PUSH BUTTON**

Activation of all GEZE automatic doors



| Designation               | Ident-No. | Colour          | Dimensions      | Type of installation       |
|---------------------------|-----------|-----------------|-----------------|----------------------------|
| LS 990 rocker push button | 098396    | Stainless steel | 81 x 81 x 11 mm | Flush-mounted installation |

**SERVICE INTERFACE**

Faster diagnosis and maintenance



| Designation             | Description  | Ident-No. |
|-------------------------|--|-----------|
| Service interface EC T2 | to be mounted onto cover of sliding doors. Allows the connection of Service Terminal or Bluetooth Interface.Connector cable length: 3 meters | 181028    |

\* The products designated above may vary in form, type, characteristics, function, or availability depending on the country. Please get in touch with your GEZE contact person if you have any questions.